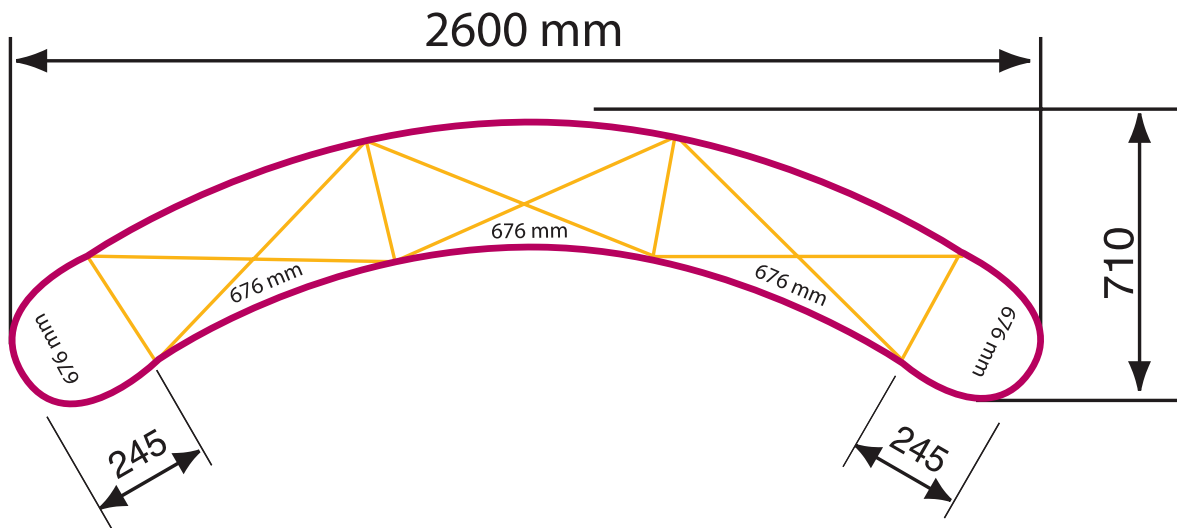
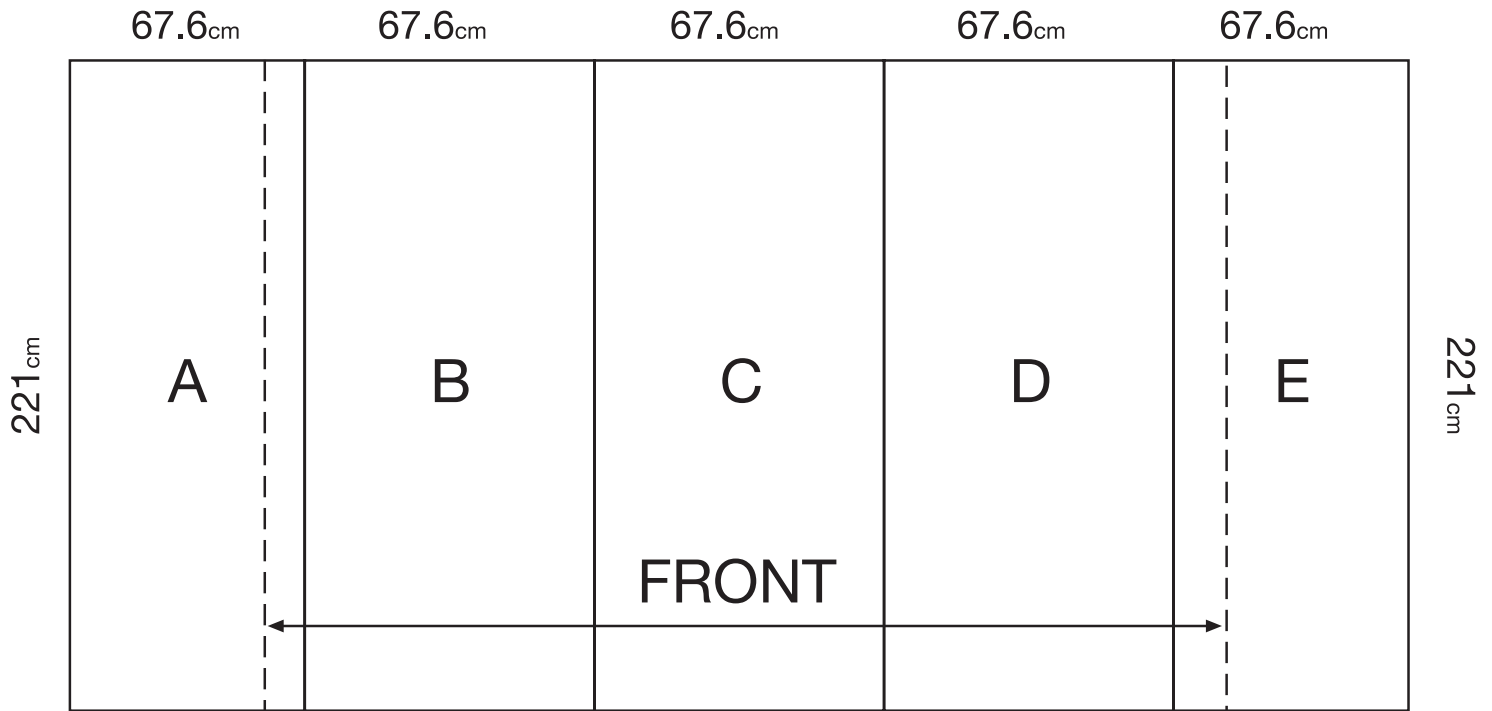


Pop up display 3x3 338_{cm} x 221_{cm}



Preparing artwork:

custom: 338x221 c"m or proportional, bleed: 1 c"m Nett dimens 336x219

The graphic layout is prepared as 1 piece!

and is divided into 5 panels (3 central and 2 side panels) during the printing process.

For the graphic layout, prepare first a grid, where guides mark the bleed and panels division.

Important graphics should be placed on the 3 central panels. The 2 side panels are only partly visible (when viewed from the front). The graphics background should exceed into the bleed area.

it is advisable not to have letters placed on the dividing lines (between panels), but to have them placed (if possible) on either side.